



SUBJECT SITE



WILBERFORCE AVE CAR PARK

LOTS A&B DP104986
 LOTS 8, 70&71
 SEC A DP4244
 WOOLLAHRA

NUMBER	DRAWING NAME	REVISION
DA0000	COVER SHEET	2
DA0002	SITE ANALYSIS	1
DA0201	PHOTO MONTAGES	2
DA1001	SITE PLAN	1
DA1101	DEMOLITION PLAN	1
DA2000	GROUND FLOOR PLAN	3
DA2001	BASEMENT PLAN	2
DA2101	LEVEL 1 PLANS	2
DA2102	LEVEL 2 PLANS	2
DA2103	LEVEL 3 PLANS	2
DA3101	ELEVATIONS	2
DA3201	SECTIONS	2
DA8001	SHADOW DIAGRAMS WINTER SOLSTICE 0900-1100	1
DA8002	SHADOW DIAGRAMS WINTER SOLSTICE 1200-1500	1
DA8003	SHADOW DIAGRAMS SUMMER SOLSTICE 0900-1100	1
DA8004	SHADOW DIAGRAMS SUMMER SOLSTICE 1200-1500	1
DA8005	SHADOW DIAGRAMS AUTUMN EQUINOX 0900-1100	1
DA8006	SHADOW DIAGRAMS AUTUMN EQUINOX 1200-1500	1
DA8007	SHADOW DIAGRAMS SPRING EQUINOX 0900-1100	1
DA8008	SHADOW DIAGRAMS SPRING EQUINOX 1200-1500	1

AREA SUMMARY
COMMUNITY FACILITIES - 812m2
PUBLIC AMENITIES /ACCESS GALLERY - 97m2
RETAIL INCL INTEGRATED CAFE- 316m2
WASTE STORAGE - 14m2
EOT CHARGING - 5m2
TOTAL GFA - 1244m2

PARKING SUMMARY
- PUBLIC CARPARK - 207 SPACES
- OTHER LAND USE PARKING - 22 SPACES
- MOTORBIKES - 22 SPACES
- EOT BICYCLES - 14 SPACES

NOISE MITIGATION MEASURES
 Refer to the Noise Impact Assessment Report prepared by SLR dated 13/05/2022 and Supplementary Noise Impact Assessment prepared by PWNA dated 23/11/2022 for noise mitigation measures.

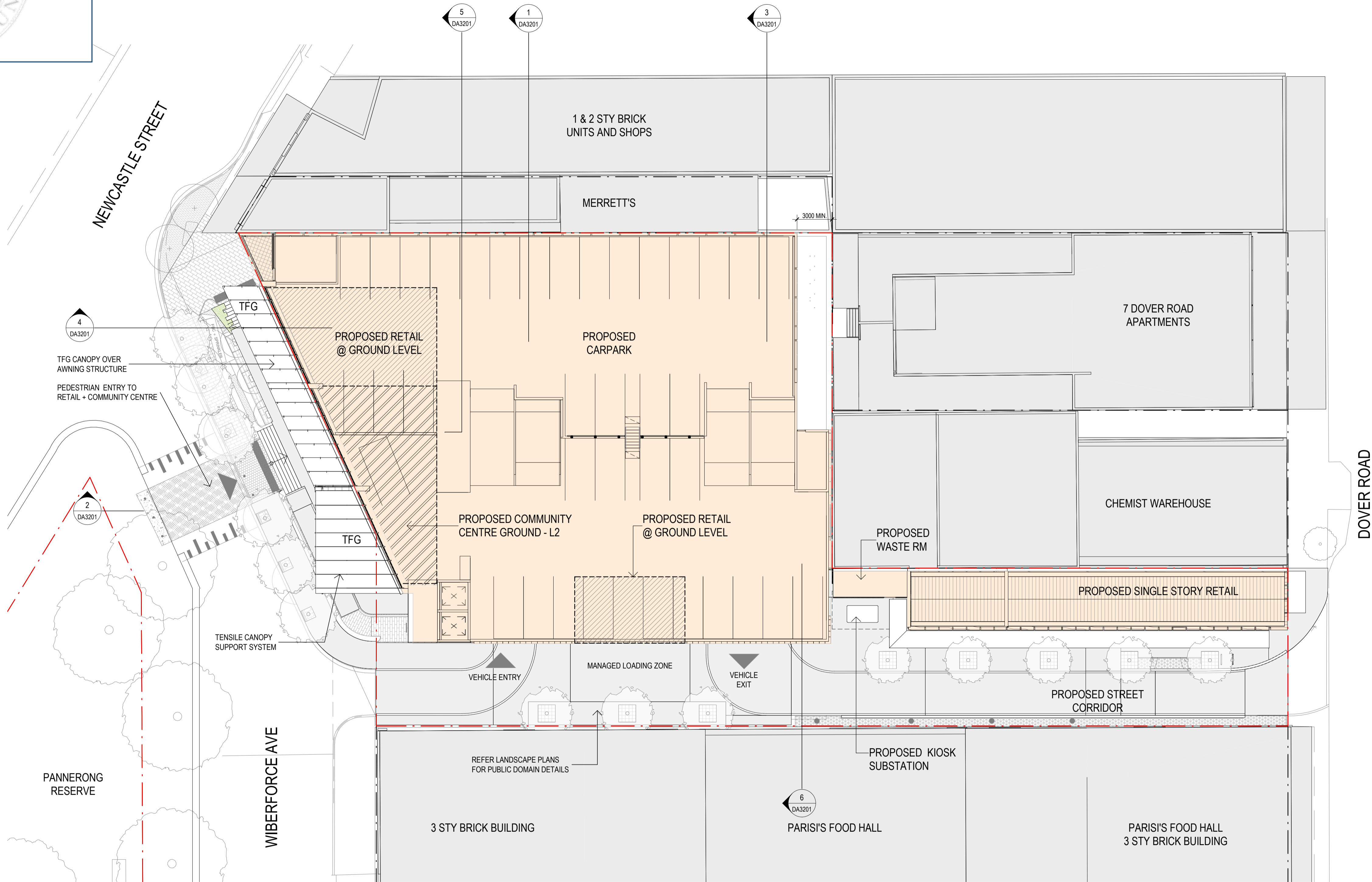
FINISHES SCHEDULE LEGEND			
1 STEEL FRAMED TIMBER AWNING STRUCTURE		3 FRAMELESS GLASS + STEEL BALUSTRADES	
2A CERAMIC FRIT DOUBLE GLAZED TIMBER / METAL CURTAIN WALL (CEDAR VENETIAN INTERNAL FITOUT)		4A LOW CEMENT CONC.BLOCKWORK 180/180/180	
2B TOUGHENED FRAMELESS GLASS SHOPFRONT		4B HONED CONC.BLOCKWORK	
2C DOUBLE GLAZED AWM CURTAIN WALL		5 HMD MODULAR SLATTED TIMBER FACADE SCREENING CLEAR FINISH	
2D DOUBLE GLAZED TIMBER CURTAIN WALL		6 HMD BIOPHILIC FACADE SYSTEM NON-COMBUSTIBLE	
2E DOUBLE GLAZED VERTICAL LIFT SHOPFRONT + COUNTER WEIGHTS		7 LONGLINE 305 METAL ROOFING / CLADDING METALLIC RANGE "ARIES"	
		8 OFF FORM CONCRETE	

Revisions No. Date Description 1 10.12.2022 D.A. SUBMISSION 2 15.08.2023 D.A. REVISIONS AS CLOUDED	Checked Approved 	Key 	Client WOOLLAHRA MUNICIPAL COUNCIL	Architect ALLEN JACK + COTTER 79 Myrtle Street Chippendale NSW 2008 AUSTRALIA ph +61 2 9311 8222 fx +61 2 9311 8200 ABN 53 003 782 250	Project WILBERFORCE AVE CAR PARK LOTS A&B DP104986 LOTS 8, 70&71 SEC A DP4244 WOOLLAHRA Proj. No. 20018	Drawing Title COVER SHEET Drawing Status NOT FOR CONSTRUCTION	Scale 1 : 50 @A1 Drawing No. DA0000 Issue 2
---	----------------------	---------	---------------------------------------	--	---	--	--

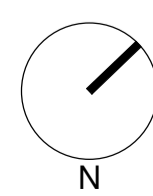
APPROVED

Date 09/11/2023

- EXISTING BUILDINGS
- PROPOSED DEVELOPMENT
- SITE BOUNDARY



Revisions No.	Date	Description	Checked	Approved
1	10.12.2022	D.A. SUBMISSION		



Client
WOOLLAHRA MUNICIPAL COUNCIL

Architect
AJ+C
ALLEN JACK+COTTER
79 Myrtle Street Chippendale NSW 2008 AUSTRALIA
ph +61 2 9311 8222 fx +61 2 9311 8200
ABN 53 003 782 250

Project
WILBERFORCE AVE CAR PARK
LOTS A&B DP104986
LOTS 6, 70&71
SEC A DP4244
WOOLLAHRA
Proj. No. 20018

Drawing Title
SITE PLAN
Drawing Status
NOT FOR CONSTRUCTION

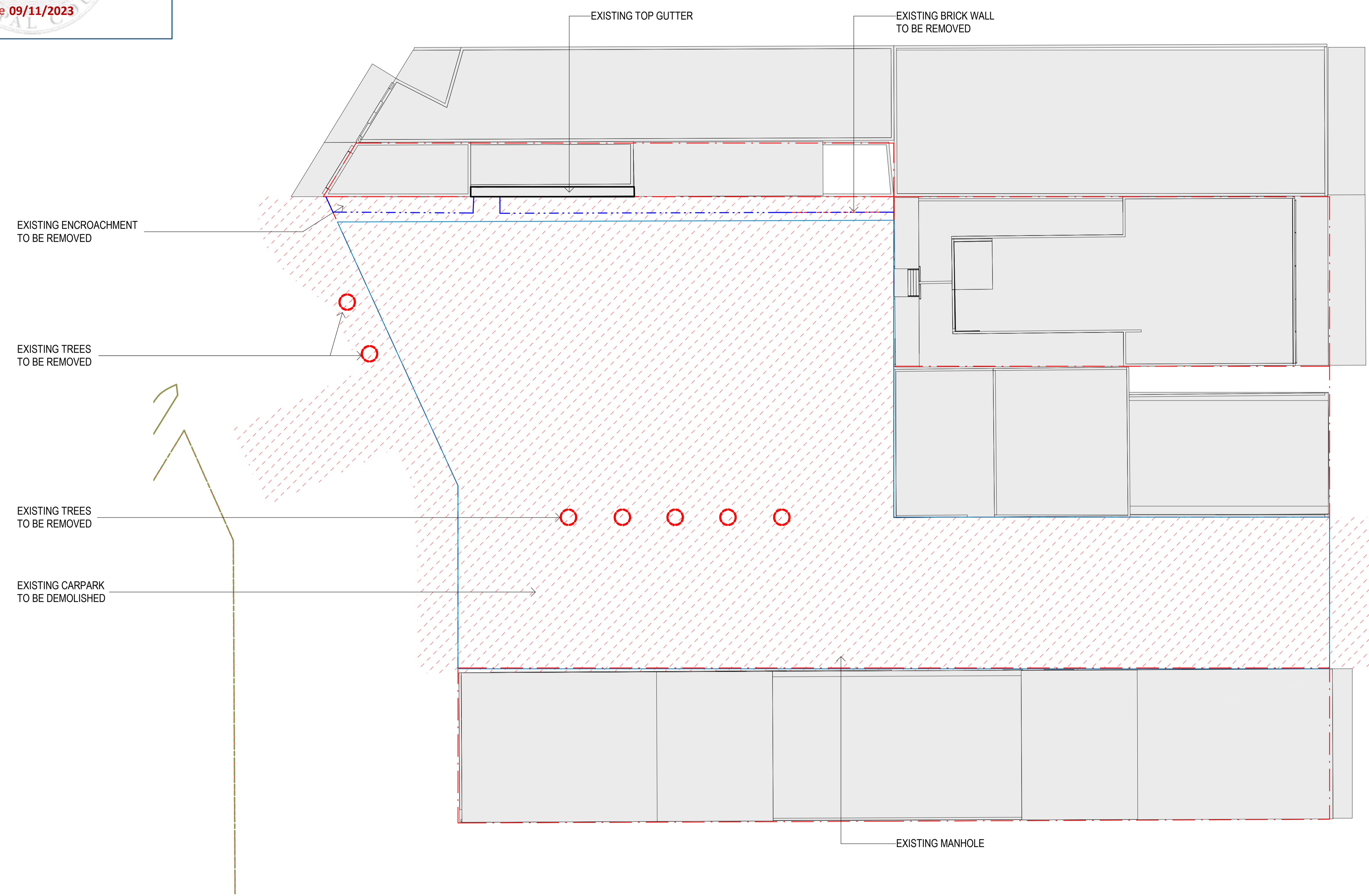
Scale
As indicated @A1
Drawing No.
DA1001 1
Issue



Woollahra Municipal Council
 Development Application DA 598/2022/1
APPROVED
 Date 09/11/2023

LEGEND

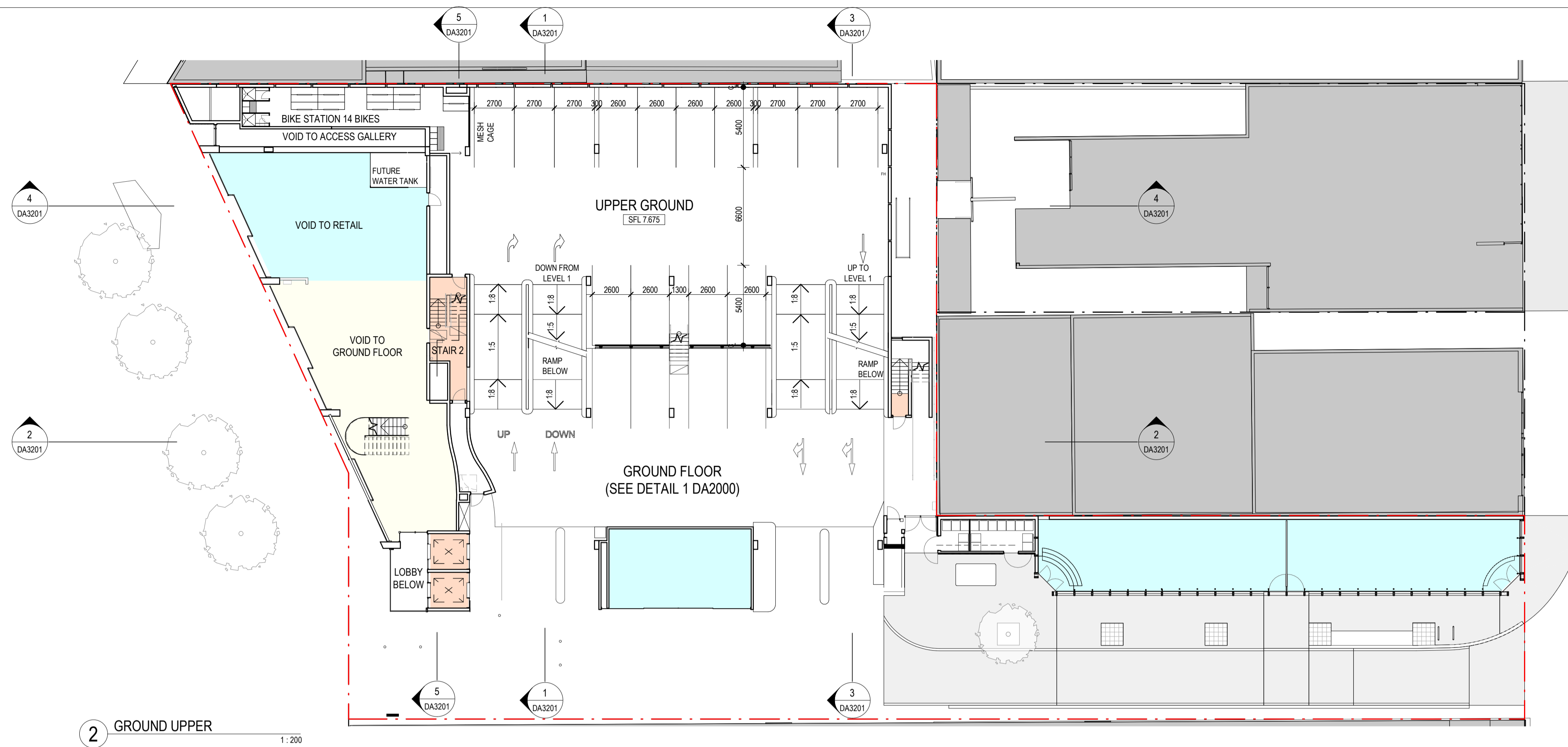
- NEIGHBOURING BUILDING
- STRUCTURES TO BE DEMOLISHED
- EXISTING TREES TO BE REMOVED



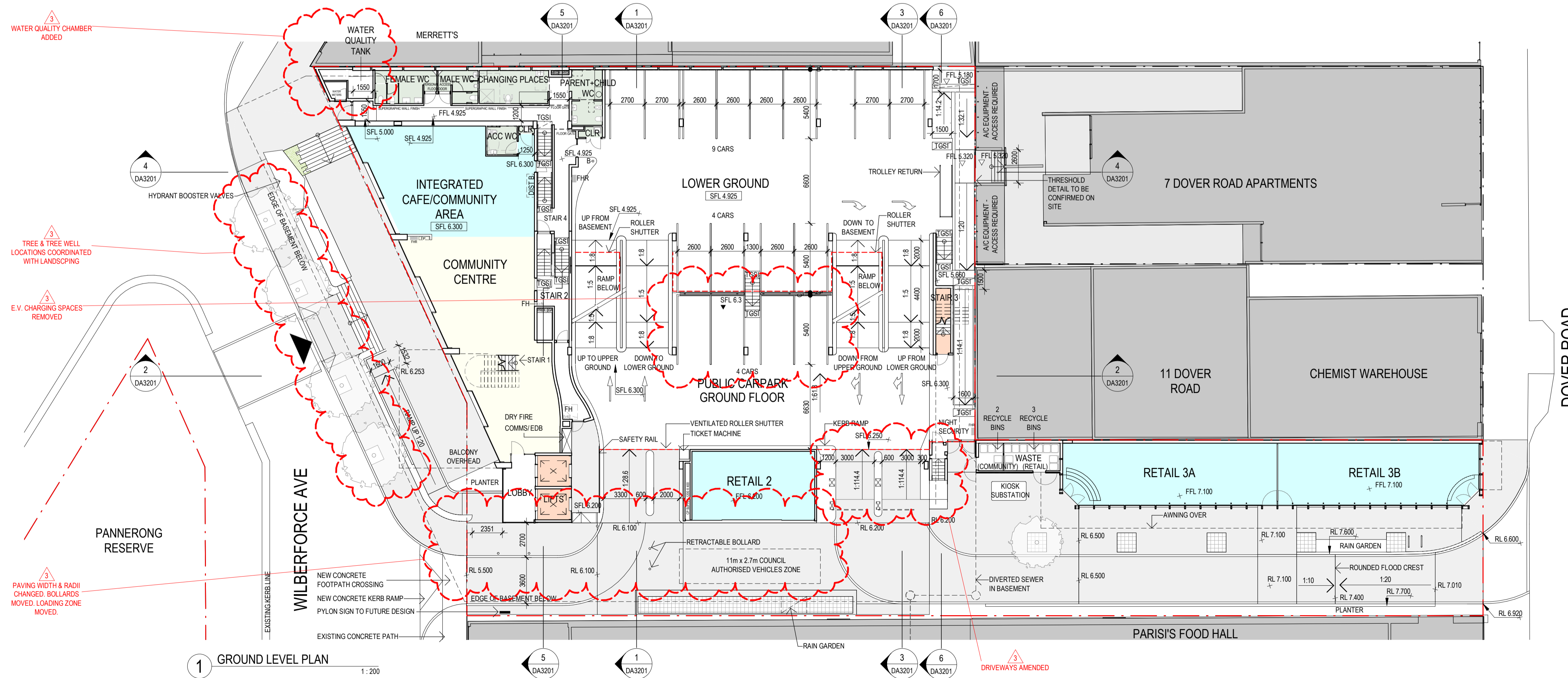
<p>Revisions</p> <table border="1"> <thead> <tr> <th>No.</th> <th>Date</th> <th>Description</th> </tr> </thead> <tbody> <tr> <td>1</td> <td>10.12.2022</td> <td>D.A. SUBMISSION</td> </tr> </tbody> </table>	No.	Date	Description	1	10.12.2022	D.A. SUBMISSION	<p>Checked Approved</p>	<p>Key</p>	<p>Client WOOLAHRA MUNICIPAL COUNCIL</p>	<p>Architect</p> <p>AJ+C <small>ALLEN JACK+COTTER</small></p> <p>79 Myrtle Street Chippendale NSW 2008 AUSTRALIA ph +61 2 9311 8222 fx +61 2 9311 8200 ABN 53 003 782 250</p>	<p>Project</p> <p>WILBERFORCE AVE CAR PARK LOTS A&B DP104986 LOTS 6, 70&71 SEC A DP4244 WOOLAHRA</p> <p>Proj. No. 20018</p>	<p>Drawing Title</p> <p>DEMOLITION PLAN</p> <p>Drawing Status</p> <p>NOT FOR CONSTRUCTION</p>	<p>Scale Drawing No. Issue</p> <p>As indicated @A1 DA1101 1</p>
No.	Date	Description											
1	10.12.2022	D.A. SUBMISSION											

Do not scale drawings. Use figured dimensions only. Check & verify levels and dimensions on site prior to the commencement of any work, the preparation of shop drawings or the fabrication of components. This drawing is the copyright of Allen Jack + Cotter Architects and is protected under the Copyright Act 1968. Do not alter, reproduce or transmit in any form, or by any means without the express permission of Allen Jack + Cotter Architects. Nominated Architects: Michael Heenan 5264, Brian Marotti 9451, John Whittingham 7030

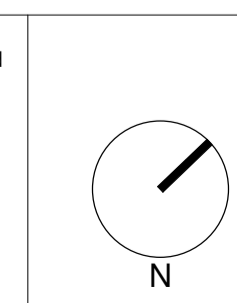
- AMENITIES
- CIRCULATION
- COMMUNITY
- RETAIL



- AMENITIES
- CIRCULATION
- COMMUNITY
- RETAIL



Revisions	No.	Date	Description	Checked	Approved
	1	12.07.2021	For Consultants		
	2	10.12.2022	D.A. SUBMISSION		
	3	15.08.2023	D.A. REVISIONS AS CLOUDED		



Client	Architect	Project	Drawing Title	Scale	Drawing No.	Issue
WOOLLAHRA MUNICIPAL COUNCIL	AJ+C ALLEN JACK + COTTER	WILBERFORCE AVE CAR PARK	GROUND FLOOR PLAN	1:200 @A1	DA2000 3	

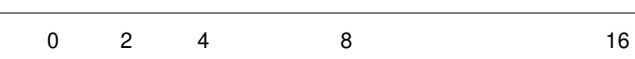
Client
WOOLLAHRA MUNICIPAL COUNCIL

Architect
AJ+C
 ALLEN JACK + COTTER
 79 Myrtle Street Chippendale NSW 2008 AUSTRALIA
 ph +61 2 9311 8222 fx +61 2 9311 8200
 ABN 53 003 782 250

Project
WILBERFORCE AVE CAR PARK
 LOTS A&B DP104986
 LOTS 6, 7&8 71
 SEC A DP4244
 WOOLLAHRA
 Proj. No. 20018

Drawing Title
GROUND FLOOR PLAN
 Drawing Status
NOT FOR CONSTRUCTION

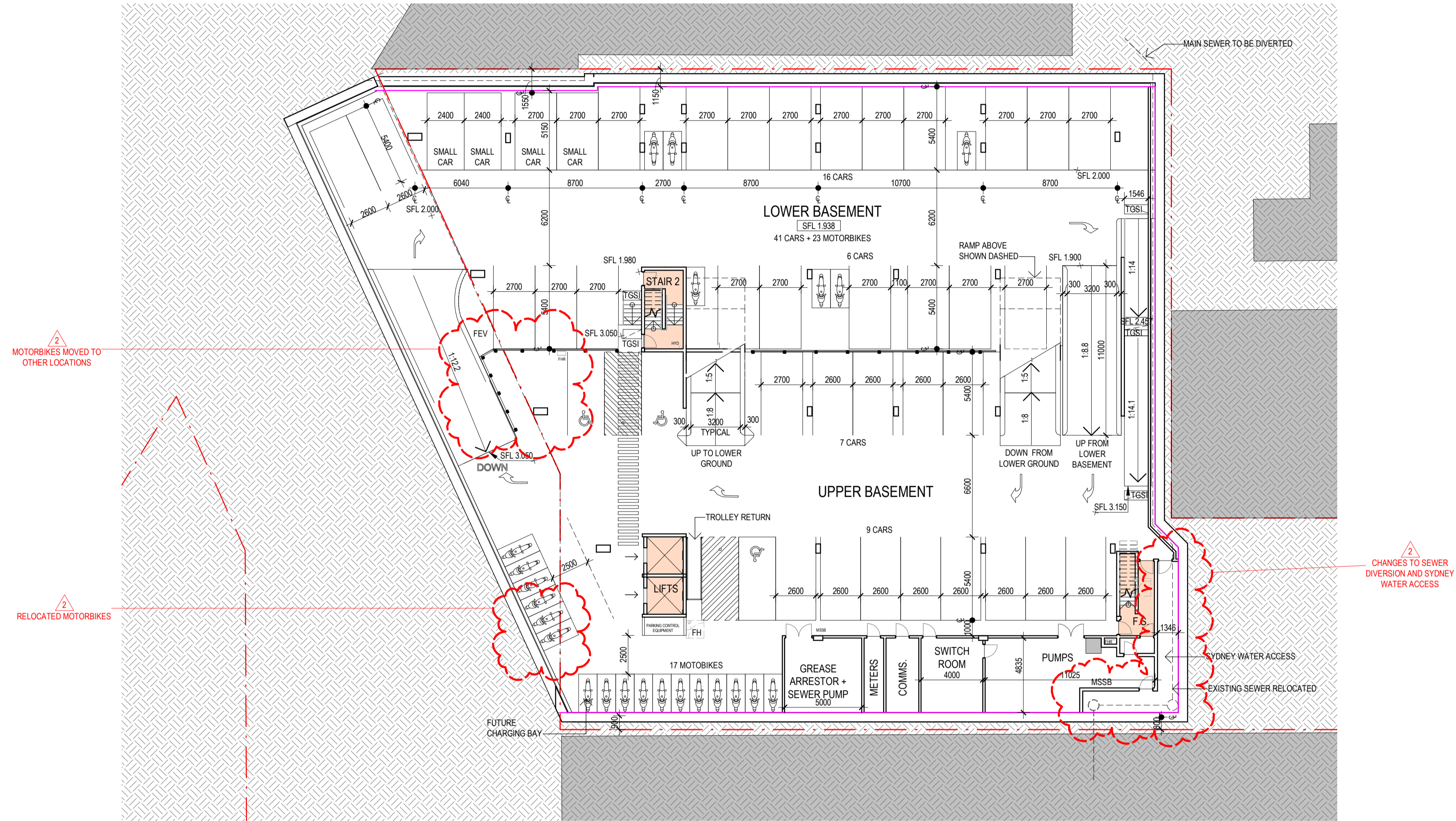
Scale
1:200 @A1
 Drawing No.
DA2000 3
 Issue
3



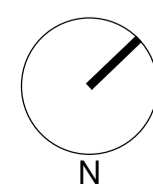
APPROVED

Date 09/11/2023

- AMENITIES
- CIRCULATION
- COMMUNITY
- RETAIL



Revisions		Checked	Approved
No.	Date	Description	
1	10.12.2022	D.A. SUBMISSION	
2	15.08.2023	D.A. REVISIONS AS CLOUDED	



Client
WOOLLAHRA MUNICIPAL COUNCIL

Architect
AJ+C
ALLEN JACK + COTTER
79 Myrtle Street Chippendale NSW 2008 AUSTRALIA
ph +61 2 9311 8222 fx +61 2 9311 8200
ABN 53 003 782 250

Project
WILBERFORCE AVE CAR PARK
LOTS A&B DP104986
LOTS 6, 70&71
SEC A DP4244
WOOLLAHRA
Proj. No. 20018

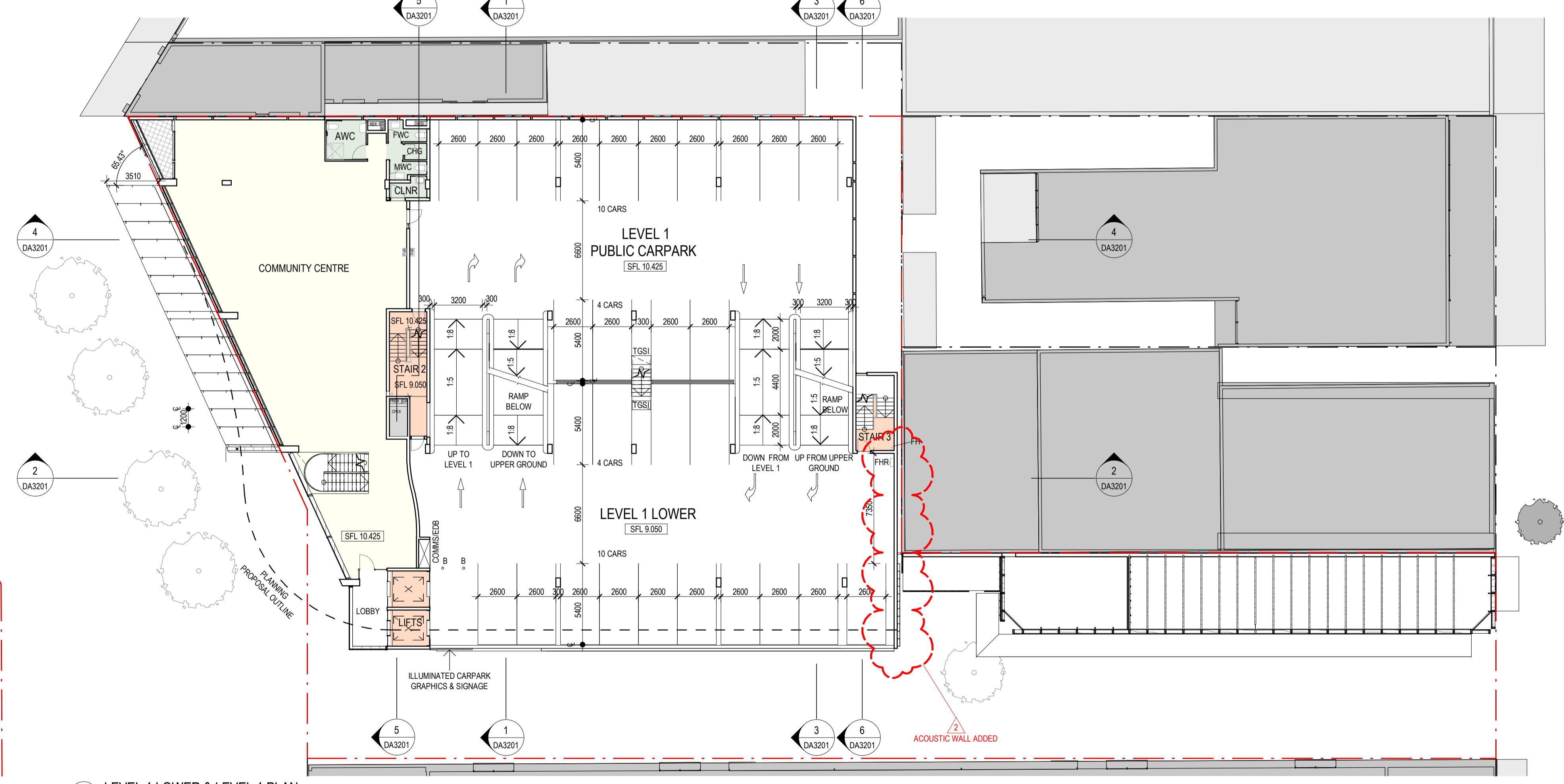
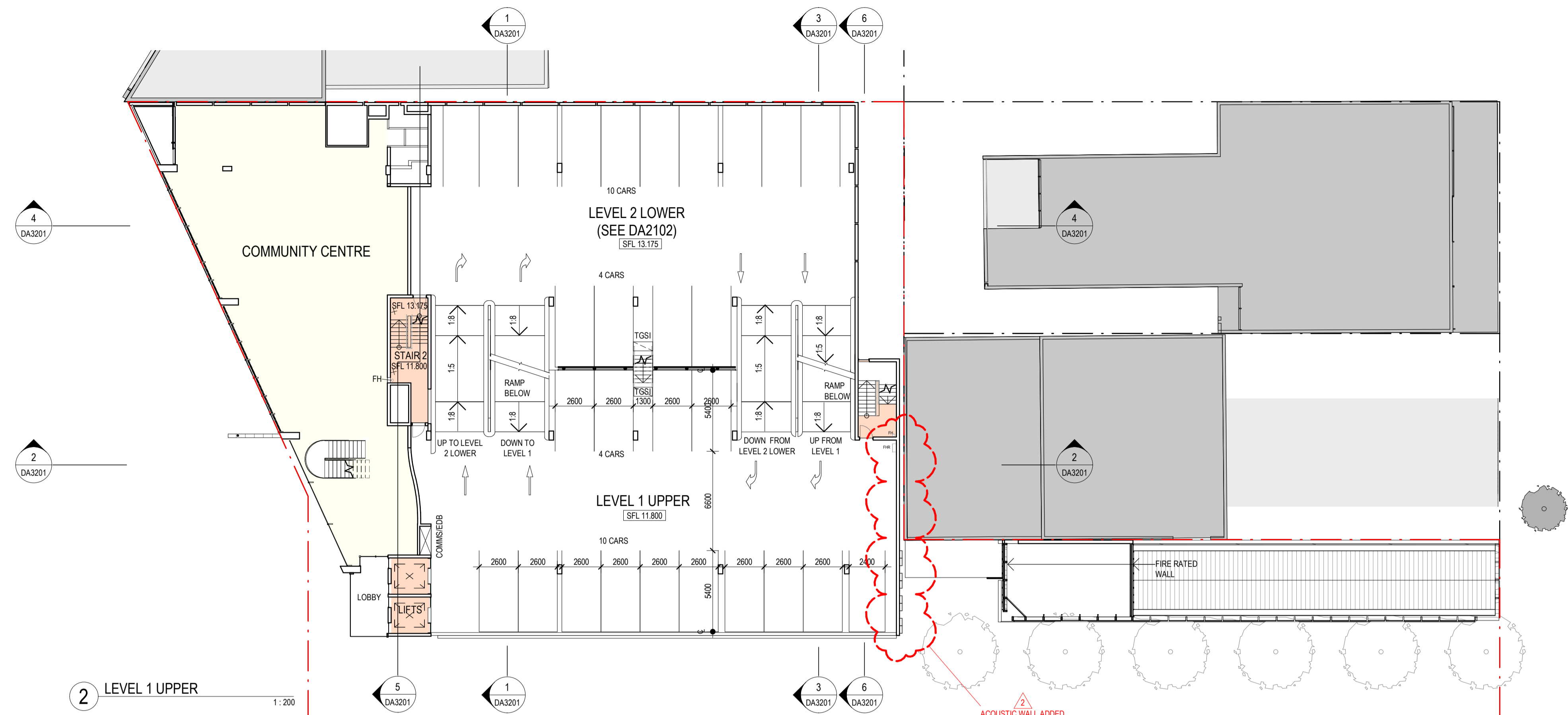
Drawing Title
BASEMENT PLAN
Drawing Status
NOT FOR CONSTRUCTION

Scale
1 : 200 @A1
Drawing No.
DA2001 2
Issue



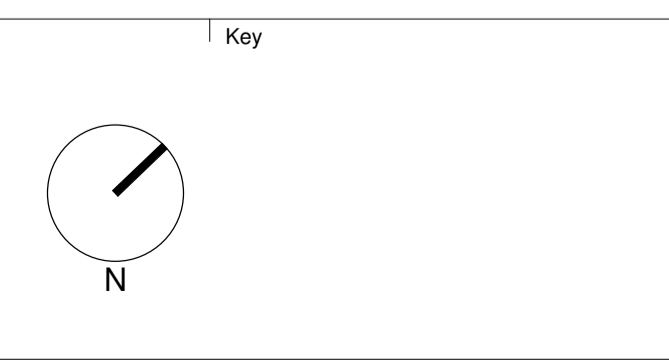
- AMENITIES
- CIRCULATION
- COMMUNITY
- RETAIL

Woollahra Municipal Council
 Development Application DA 598/2022/1
APPROVED
 Date 09/11/2023



Revisions	No.	Date	Description
	1	10.12.2022	D.A. SUBMISSION
	2	15.08.2023	D.A. REVISIONS AS CLOUDED

Checked	Approved



Client
WOOLLAHRA MUNICIPAL COUNCIL

Architect

AJ+C

ALLEN JACK + COTTER

79 Myrtle Street Chippendale NSW 2008 AUSTRALIA
 ph +61 2 9311 8222 fx +61 2 9311 8200
 ABN 53 003 782 250

Project

WILBERFORCE AVE CAR PARK
 LOTS A&B DP104986
 LOTS 6, 70&71
 SEC A DP4244
 WOOLLAHRA

Proj. No. 20018

Drawing Title

LEVEL 1 PLANS

Drawing Status

NOT FOR CONSTRUCTION

Scale

1 : 200 @A1

Drawing No.

DA2101 2

Issue

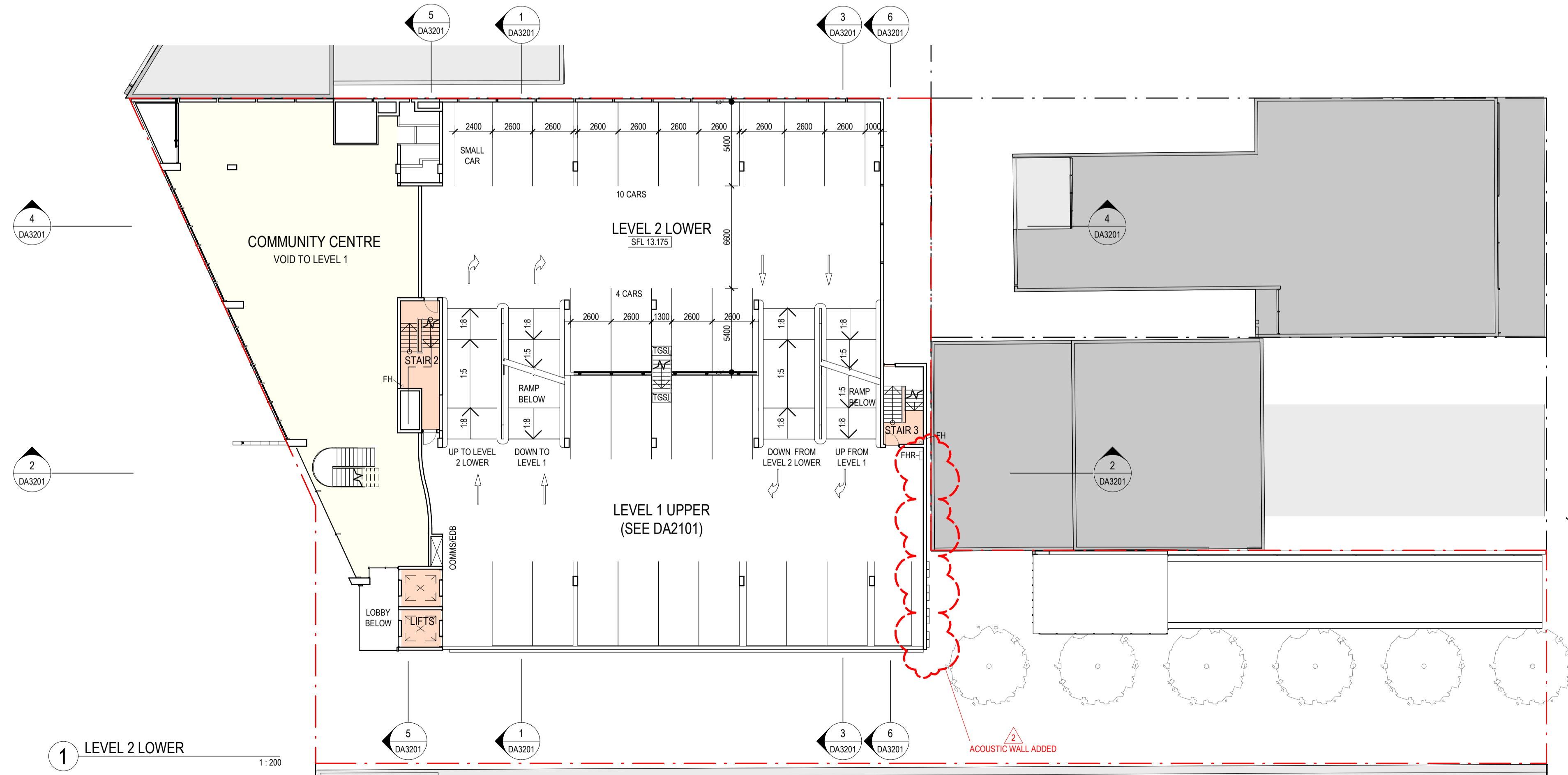
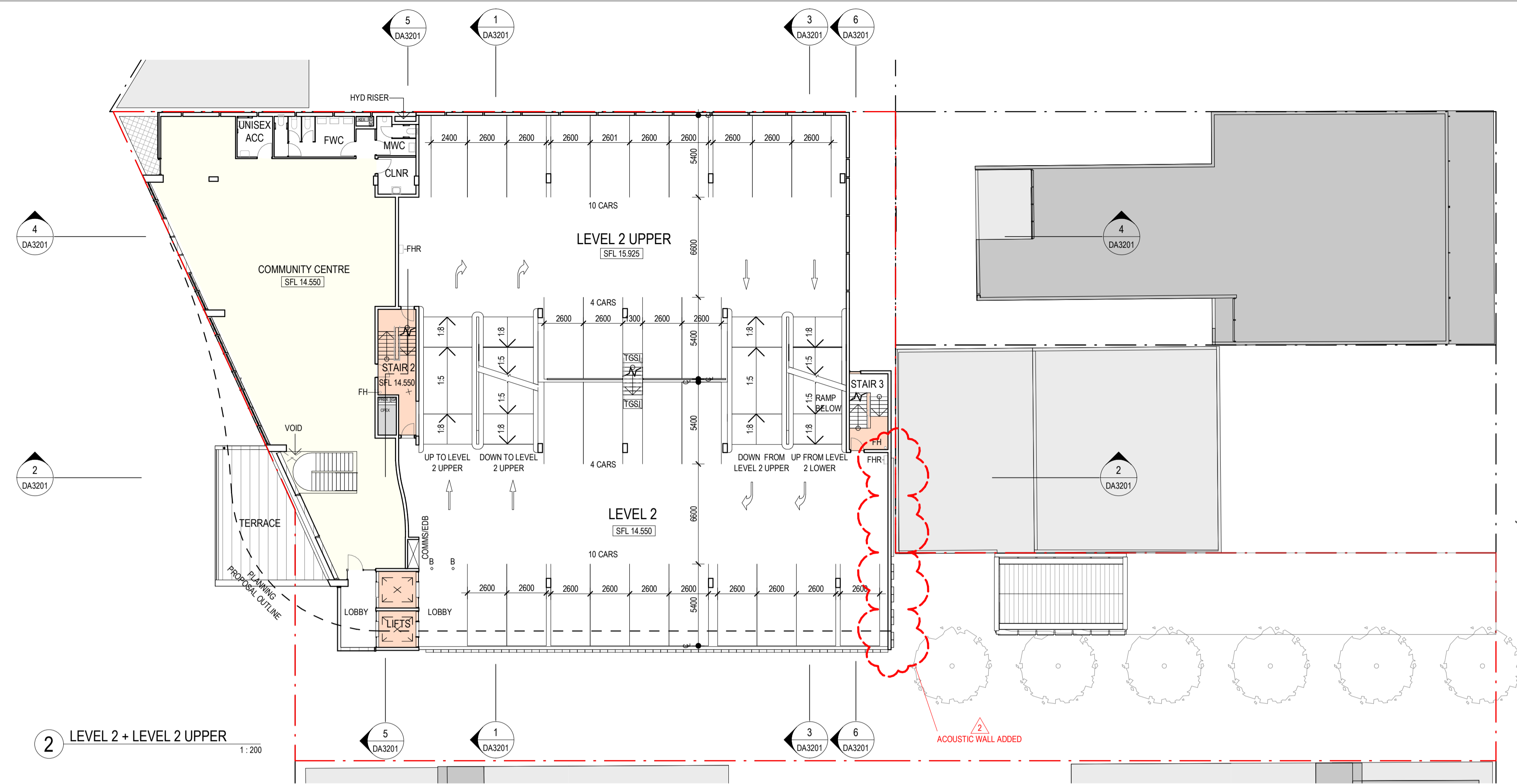
- AMENITIES
- CIRCULATION
- COMMUNITY
- RETAIL

Woollahra Municipal Council
Development Application DA 598/2022/1



APPROVED

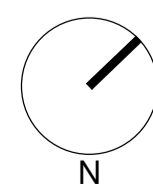
Date 09/11/2023



- AMENITIES
- CIRCULATION
- COMMUNITY
- RETAIL

Revisions	No.	Date	Description
	1	10.12.2022	D.A. SUBMISSION
	2	15.08.2023	D.A. REVISIONS AS CLOUDED

Checked Approved



Key

Client
WOOLLAHRA MUNICIPAL COUNCIL

Architect



AJ+C
ALLEN JACK + COTTER

79 Myrtle Street Chippendale NSW 2008 AUSTRALIA
ph +61 2 9311 8222 fx +61 2 9311 8200
ABN 53 003 782 250

Project
WILBERFORCE AVE CAR PARK
LOTS A&B DP104986
LOTS 6, 70&71
SEC A DP4244
WOOLLAHRA

Proj. No. 20018

Drawing Title
LEVEL 2 PLANS

Drawing Status
NOT FOR CONSTRUCTION

Scale
1:200 @A1

Drawing No.
DA2102 2

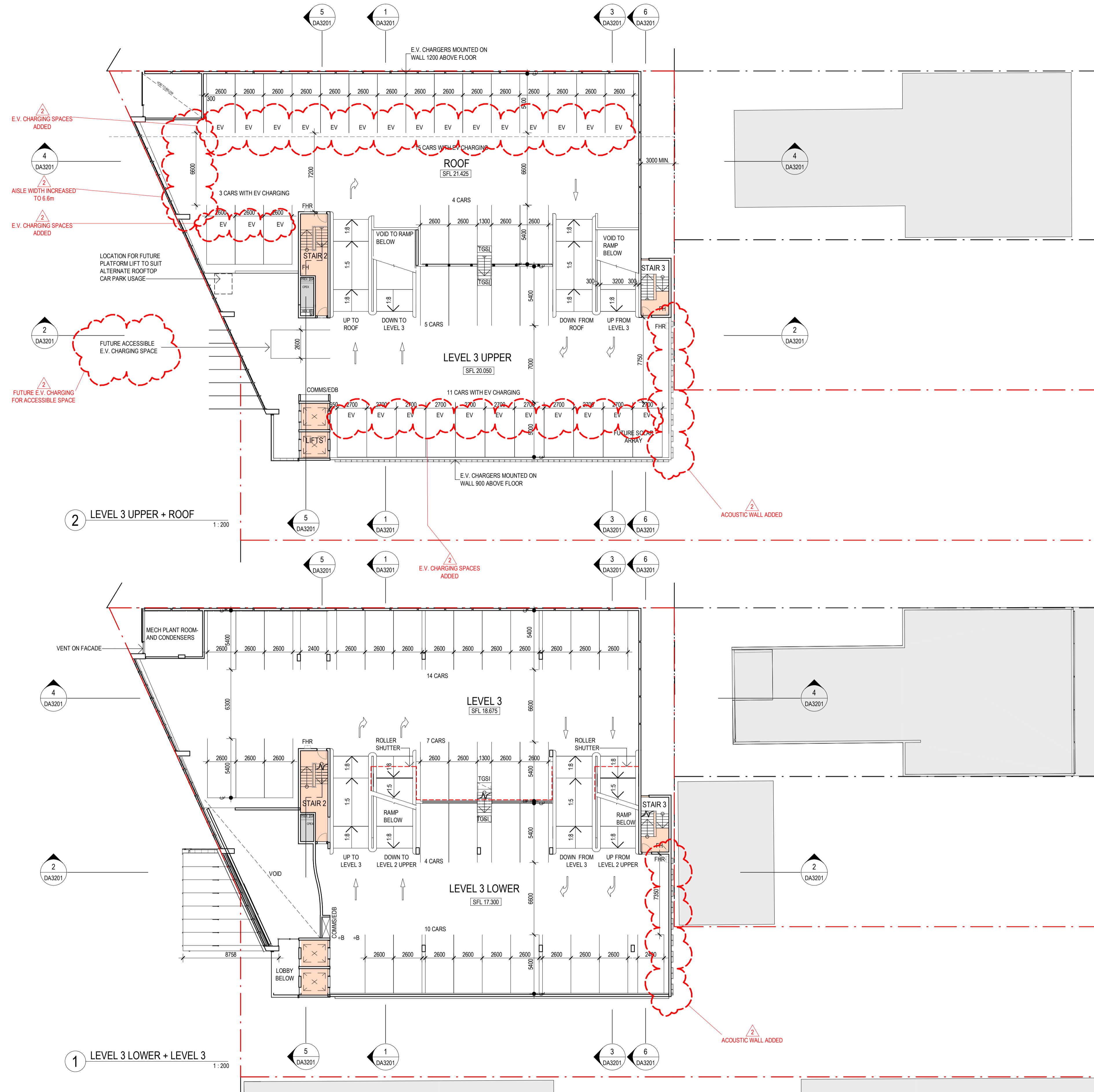
Issue



APPROVED

Date 09/11/2023

- AMENITIES
- CIRCULATION
- COMMUNITY
- RETAIL

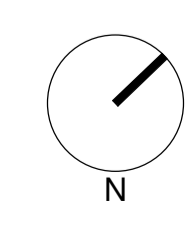


- AMENITIES
- CIRCULATION
- COMMUNITY
- RETAIL

Revisions	No.	Date	Description
1	10.12.2022	D.A. SUBMISSION	
2	15.08.2023	D.A. REVISIONS AS CLOUDED	

Checked Approved

Key



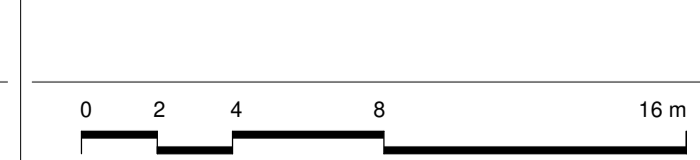
Client
WOOLLAHRA MUNICIPAL COUNCIL

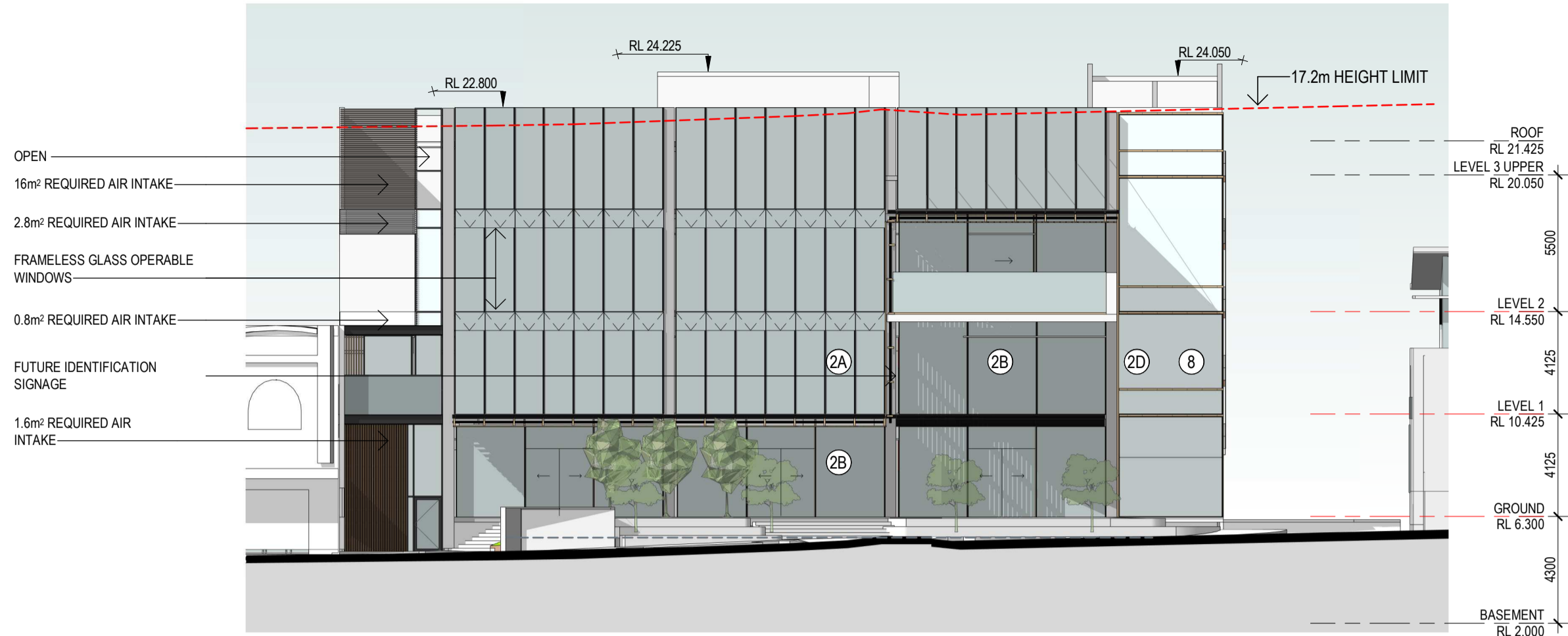
Architect
AJ+C
ALLEN JACK + COTTER
79 Myrtle Street Chippendale NSW 2008 AUSTRALIA
ph +61 2 9311 8222 fx +61 2 9311 8200
ABN 53 003 782 250

Project
WILBERFORCE AVE CAR PARK
LOTS A&B DP104986
LOTS 6, 70&71
SEC A DP4244
WOOLLAHRA
Proj. No. 20018

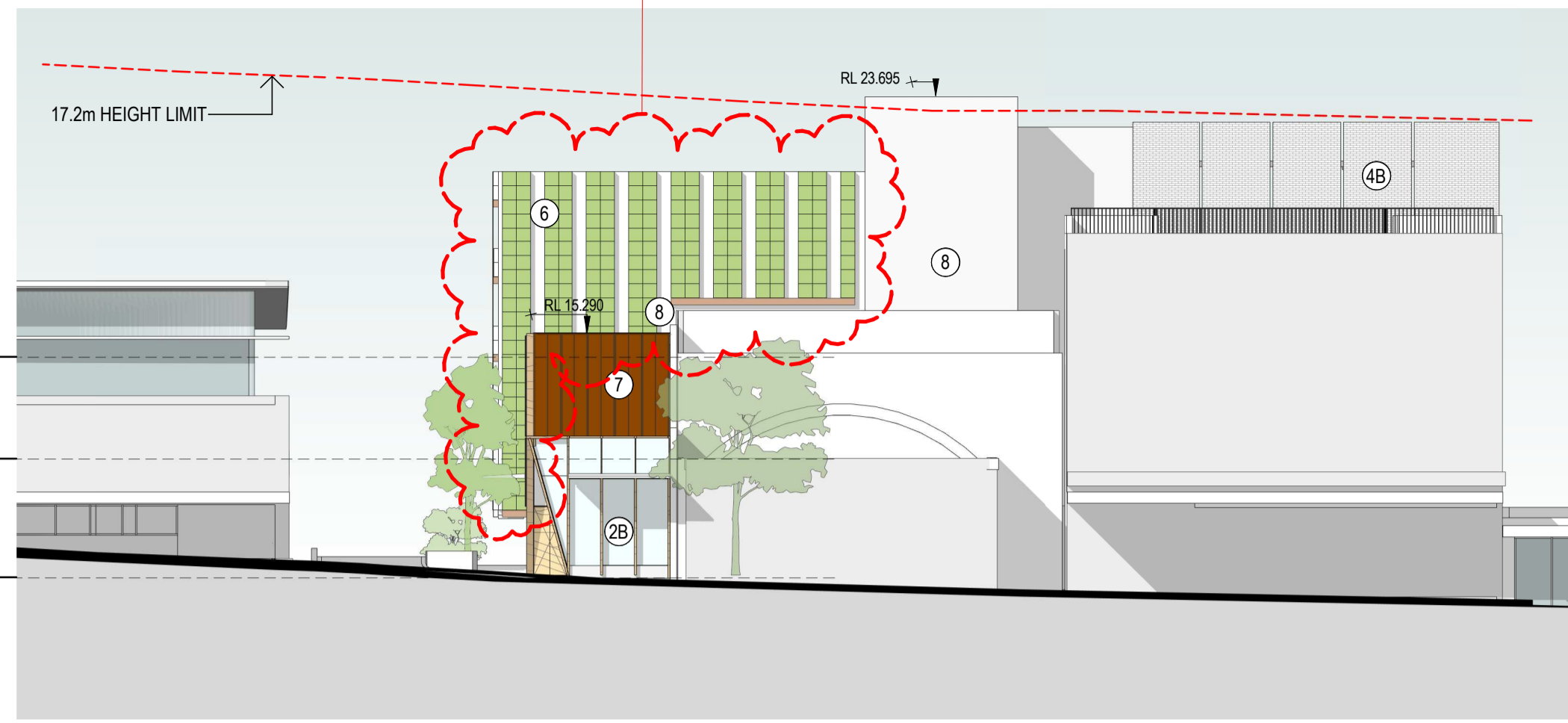
Drawing Title
LEVEL 3 PLANS
Drawing Status
NOT FOR CONSTRUCTION

Scale | Drawing No. | Issue
1 : 200 @A1 | **DA2103 2**





1 SOUTH WEST ELEVATION 1:200

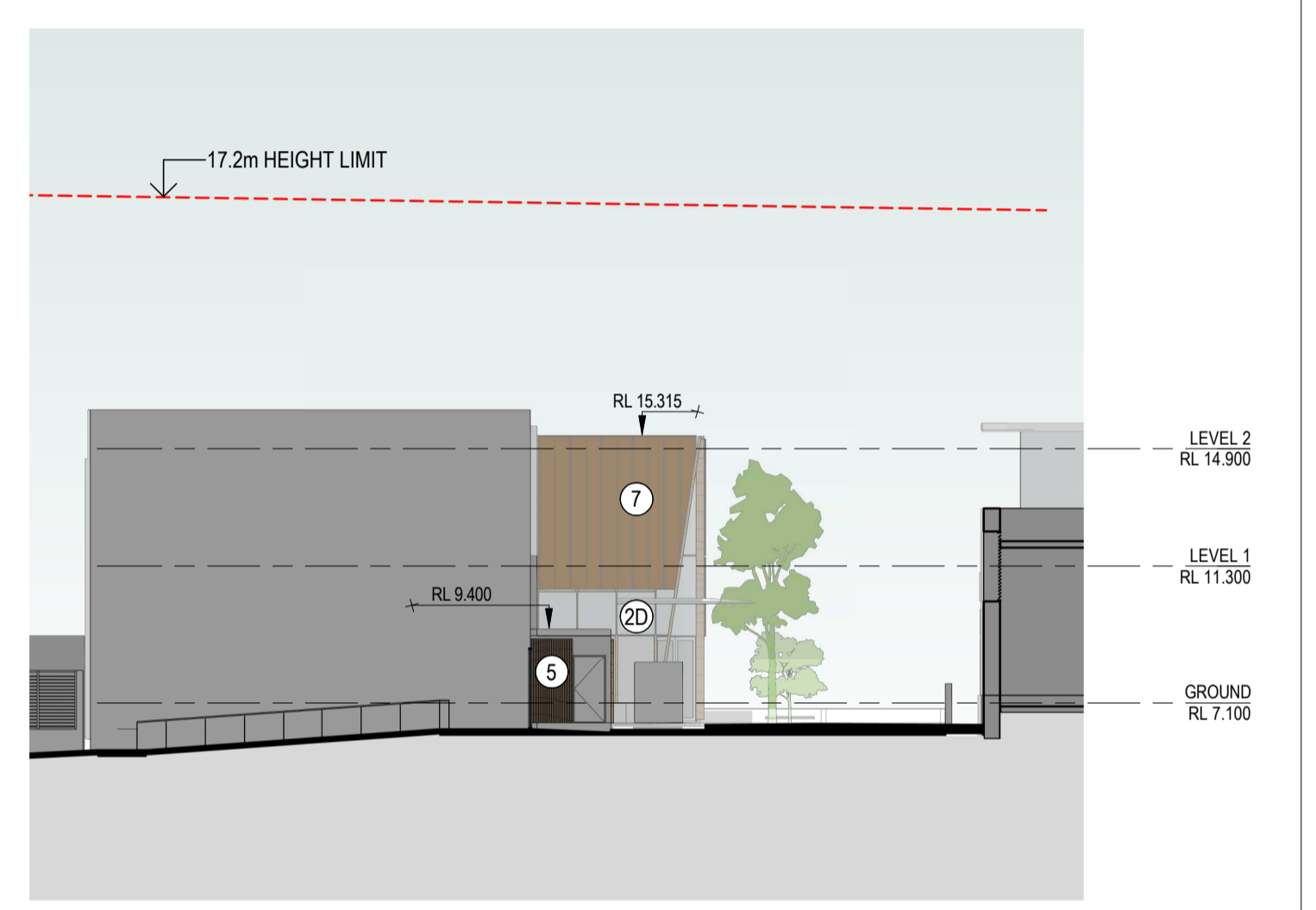


2 DOVER STREET ELEVATION 1:200

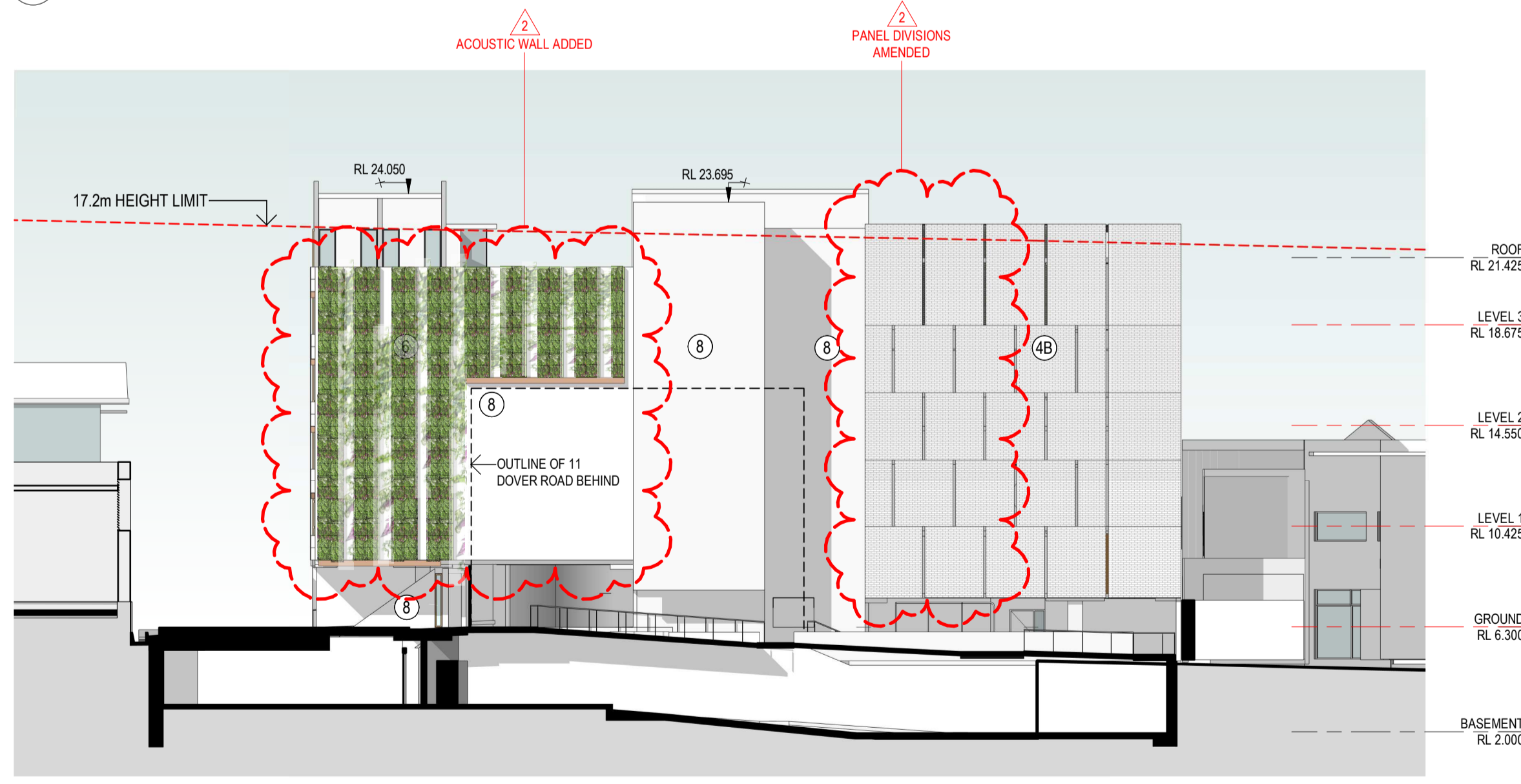
FINISHES SCHEDULE LEGEND	
1	STEEL FRAMED TIMBER AWNING STRUCTURE
2A	CERAMIC FRIT DOUBLE GLAZED TIMBER / METAL CURTAIN WALL (CEDAR VENETION INTERNAL FITOUT)
2B	TOUGHENED FRAMELESS GLASS SHOPFRONT
2C	DOUBLE GLAZED AWM CURTAIN WALL
2D	DOUBLE GLAZED TIMBER CURTAIN WALL
2E	DOUBLE GLAZED VERTICAL LIFT SHOPFRONT + COUNTER WEIGHTS
3	FRAMELESS GLASS + STEEL BALUSTRADES
4A	LOW CEMENT CONC. BLOCKWORK 180/180/180
4B	HONED CONC. BLOCKWORK
5	HMD MODULAR SLATTED TIMBER FACADE SCREENING CLEAR FINISH
6	HMD BIOPHILIC FACADE SYSTEM NON-COMBUSTIBLE
7	LONGLINE 305 METAL ROOFING / CLADDING METALLIC RANGE "ARIES"
8	OFF FORM CONCRETE



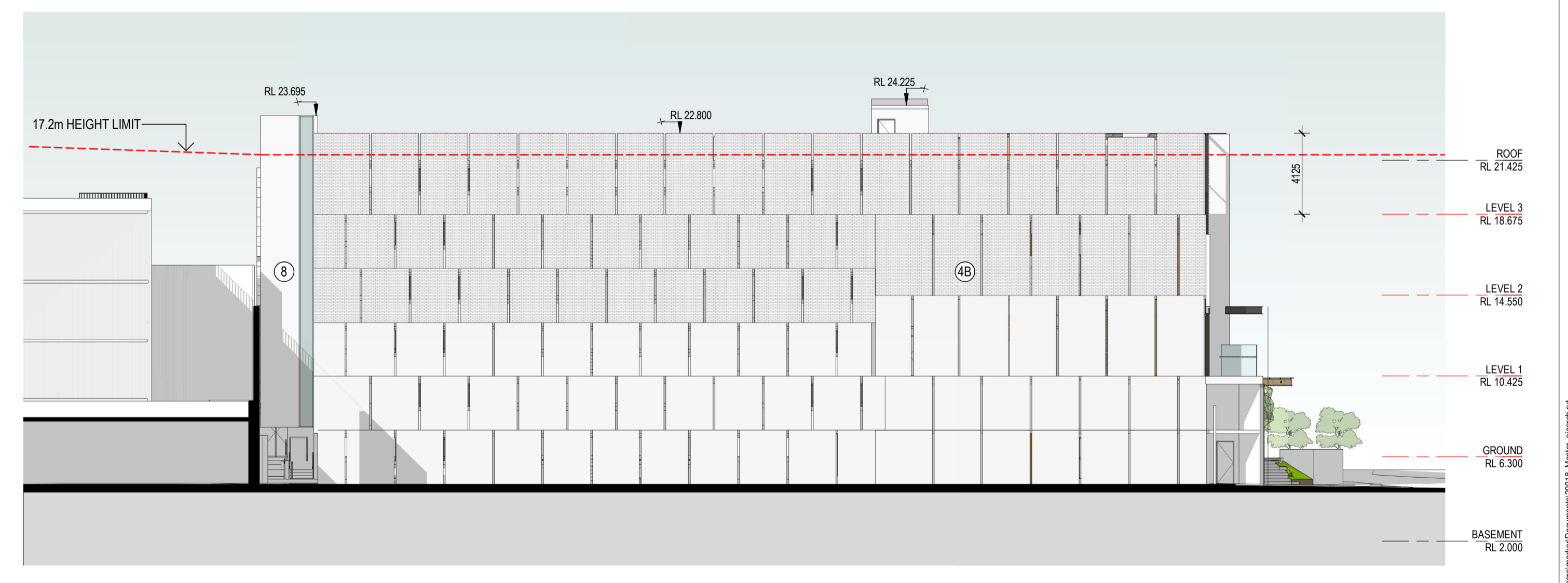
3 SOUTH EAST ELEVATION 1:200



4 SECTION 6 1:200



5 NORTH EAST ELEVATION 1:200



6 NORTH WEST ELEVATION 1:200

Woollahra Municipal Council
 Development Application DA 598/2022/1
APPROVED
 Date 09/11/2023

Revisions	No.	Date	Description	Checked	Approved
	1	10.12.2022	D.A. SUBMISSION		
	2	15.08.2023	D.A. REVISIONS AS CLOUDED		

Key

Client
 WOOLLAHRA MUNICIPAL COUNCIL

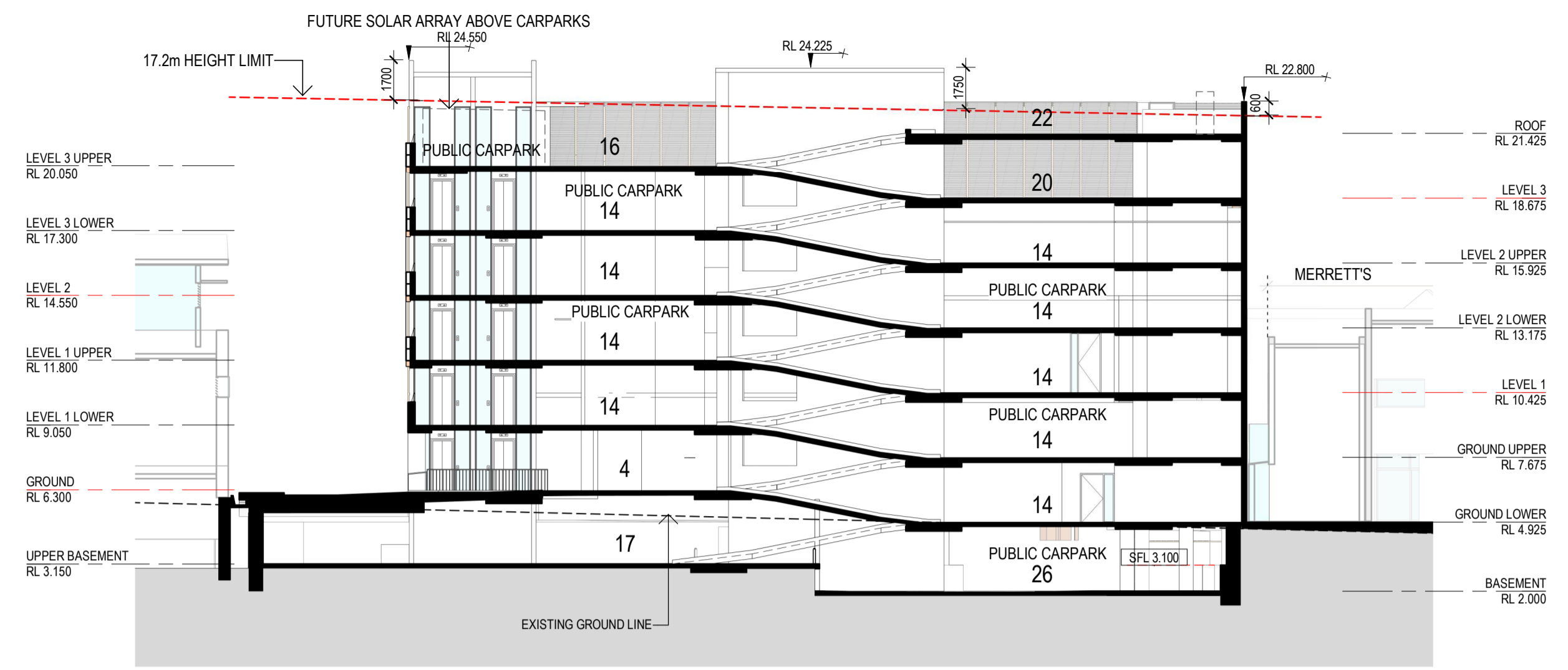
Architect
AJ+C
 ALLEN JACK + COTTER
 79 Myrtle Street Chippendale NSW 2008 AUSTRALIA
 ph +61 2 9311 8222 fx +61 2 9311 8200
 ABN 53 003 782 250

Project
 WILBERFORCE AVE CAR PARK
 LOTS A&B DP104986
 LOTS 6, 70&71
 SEC A DP4244
 WOOLLAHRA
 Proj. No. 20018

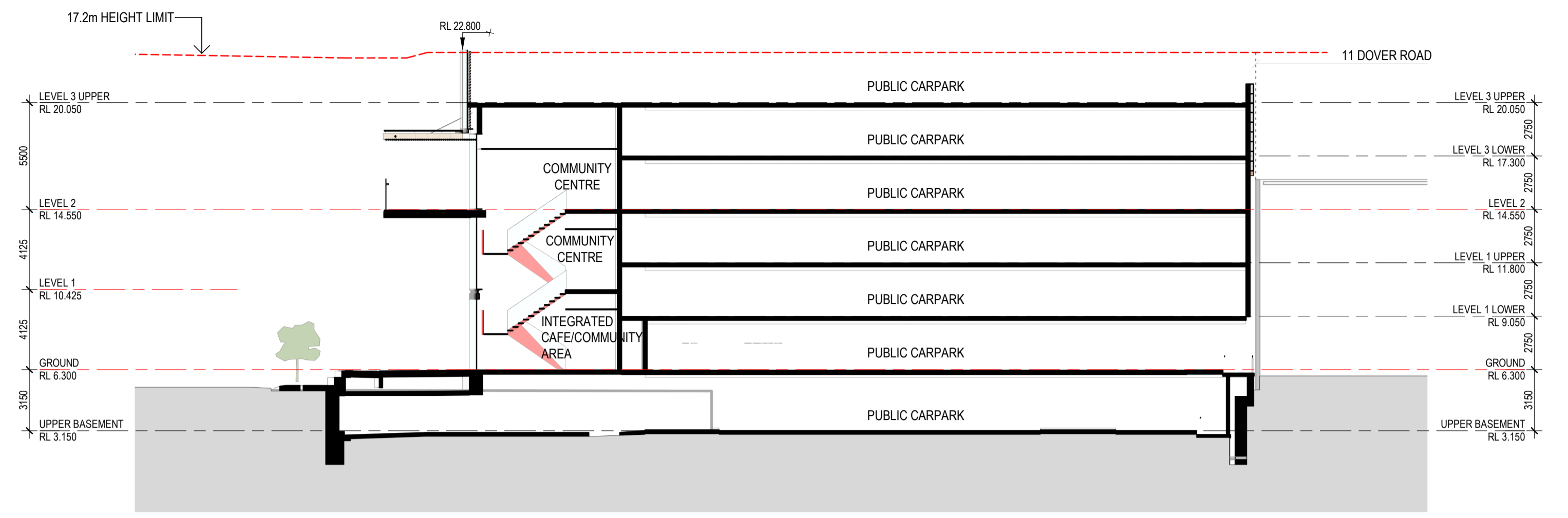
Drawing Title
ELEVATIONS
 Drawing Status
 NOT FOR CONSTRUCTION

Scale
 As indicated @A1
 Drawing No.
DA3101 2
 Issue
 2
 0 2 4 8 16 m

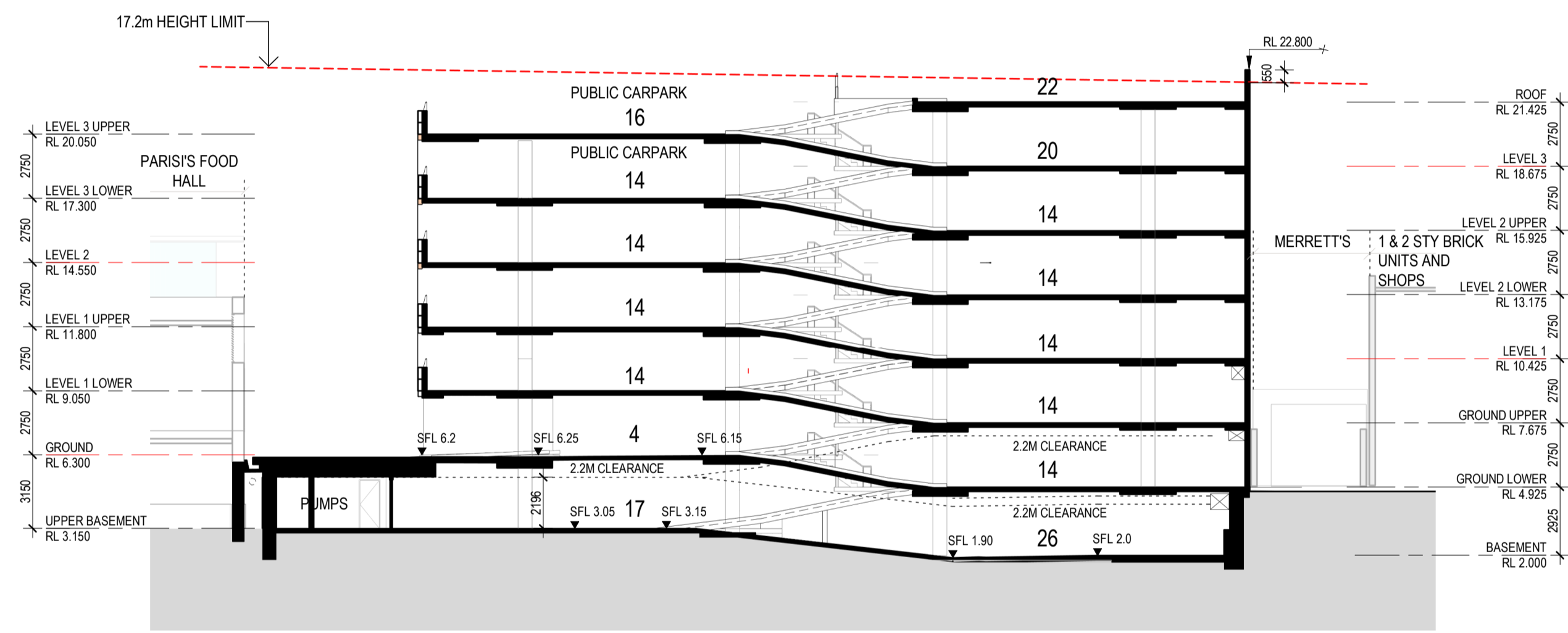
Do not scale drawings. Use guided dimensions only. Check all levels and dimensions on site prior to the commencement of any work, the preparation of shop drawings or the fabrication of components. This drawing is the copyright of Allen Jack + Cotter Architects and is protected under the Copyright Act 1968. Do not alter, reproduce or transmit in any form, or by any means without the express permission of Allen Jack + Cotter Architects. Nominated Architects: Michael Heenan 5284, Brian Marotti 9451, John Whittingham 7030



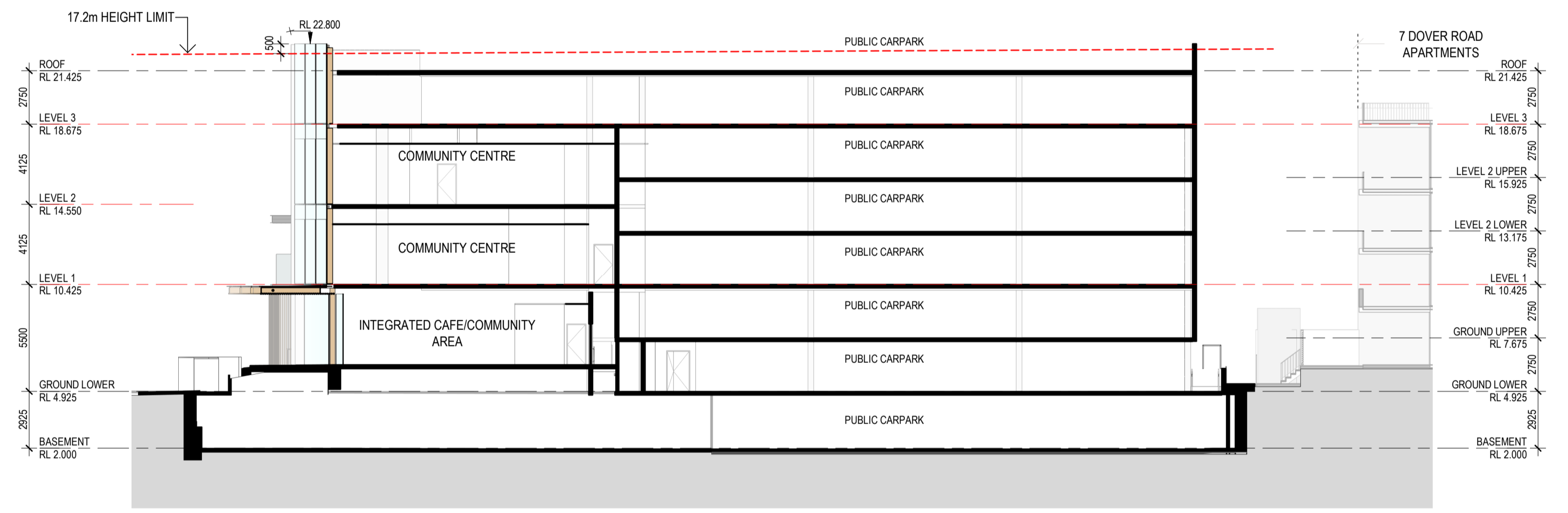
1 SECTION 1-1
1:200



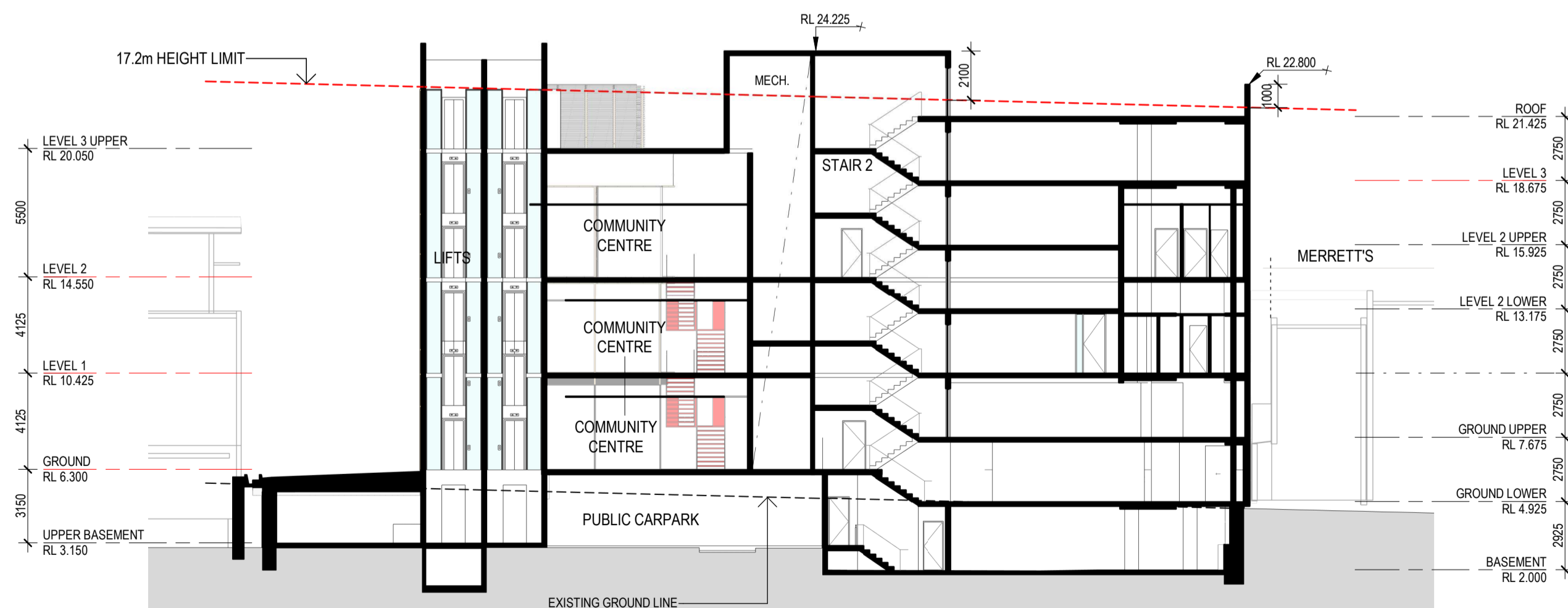
2 SECTION 2-2
1:200



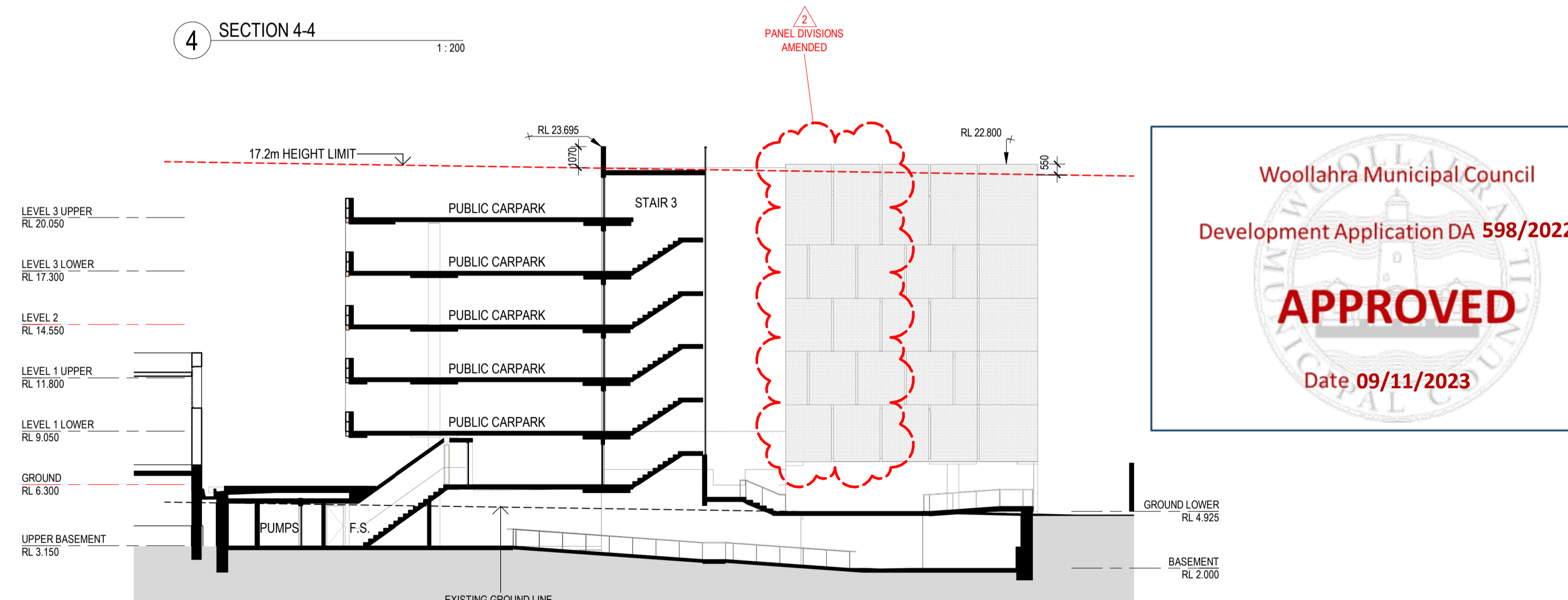
3 SECTION 3-3
1:200



4 SECTION 4-4
1:200



5 SECTION 5-5
1:200



6 SECTION 6-6
1:200

Woollahra Municipal Council
Development Application DA 598/2022/1
APPROVED
Date 09/11/2023

Revisions	No.	Date	Description	Checked	Approved
1	10.12.2022	D.A. SUBMISSION			
2	15.08.2023	D.A. REVISIONS AS CLOUDED			

Key

Client
WOOLLAHRA MUNICIPAL COUNCIL

Architect
AJ+C
ALLEN JACK + COTTER
79 Myrtle Street Chippendale NSW 2008 AUSTRALIA
ph +61 2 9311 8222 fx +61 2 9311 8200
ABN 53 003 782 250

Project
WILBERFORCE AVE CAR PARK
LOTS A&B DP104986
LOTS 6, 70&71
SEC A DP4244
WOOLLAHRA
Proj. No. 20018

Drawing Title
SECTIONS
Drawing Status
NOT FOR CONSTRUCTION

Scale
1:200 @A1
Drawing No.
DA3201 2
Issue